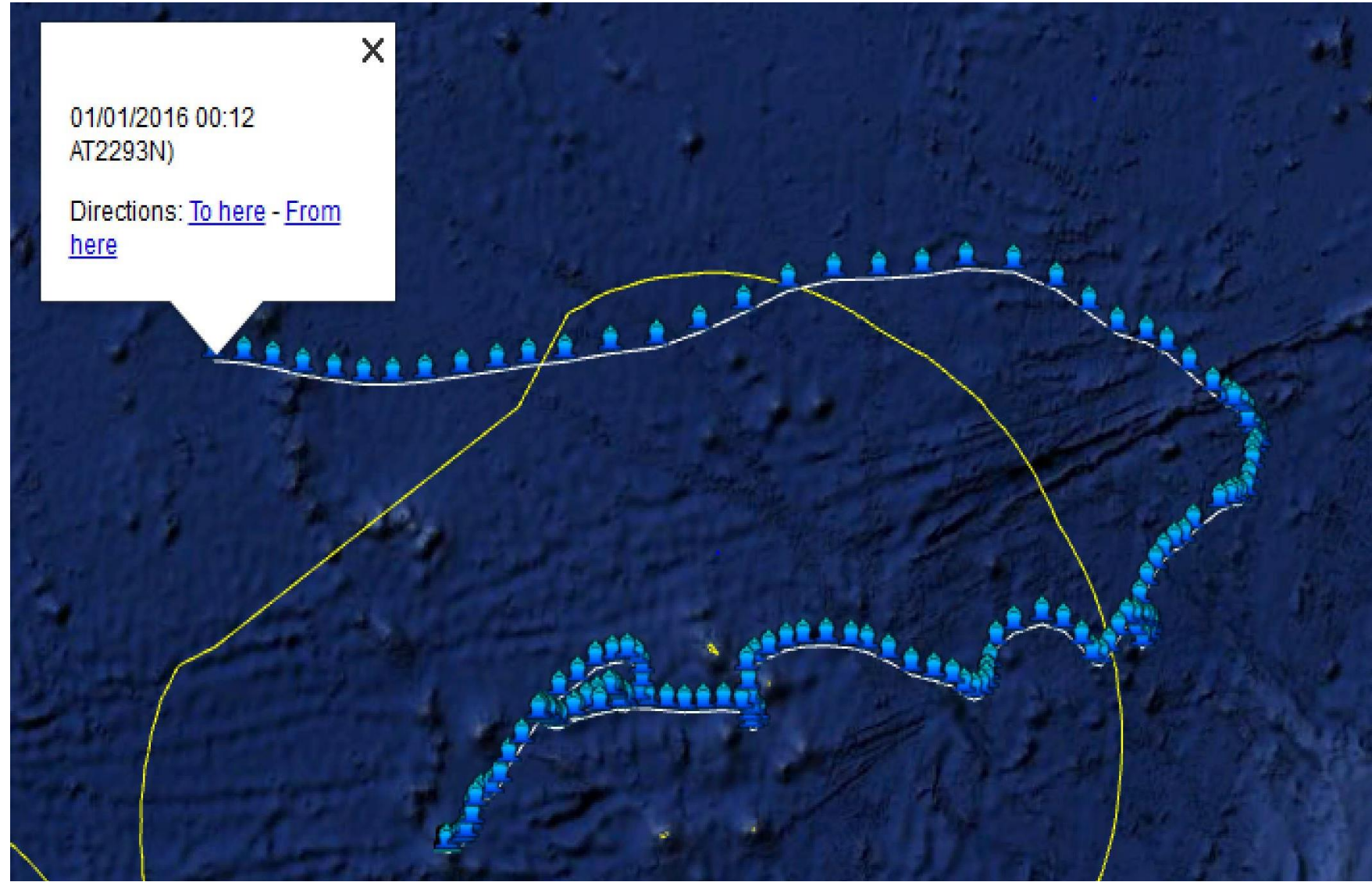


# "FAD Bans, Management, Tracking and Purse Seining in the Future"

**AMERICAS TUNA  
CONFERENCE  
2020.**

**PANAMA CITY.  
6 -7 FEBRUARY 2020**

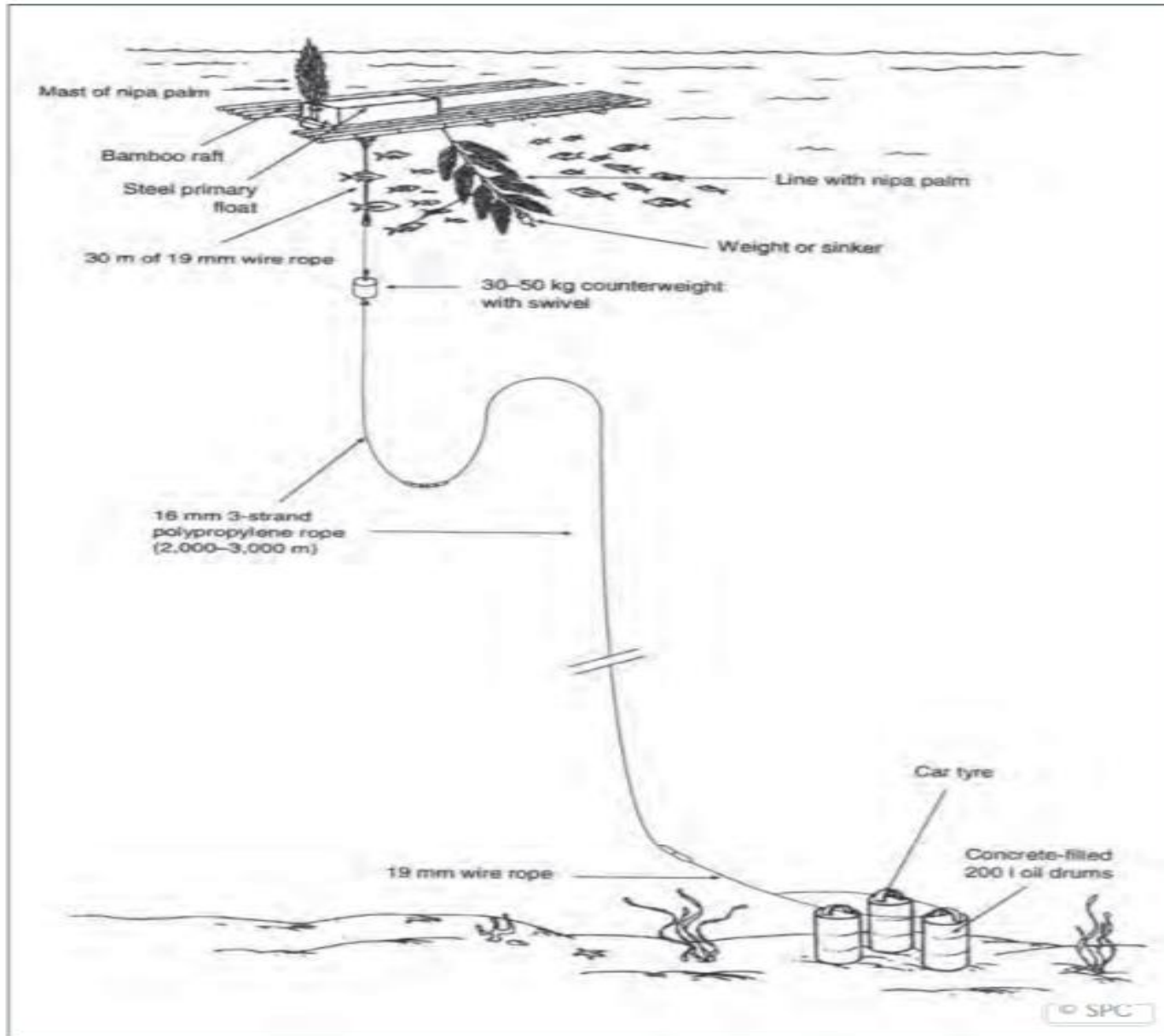
**Maurice Brownjohn OBE  
Commercial Manager  
PNA Office, Majuro, RMI.**



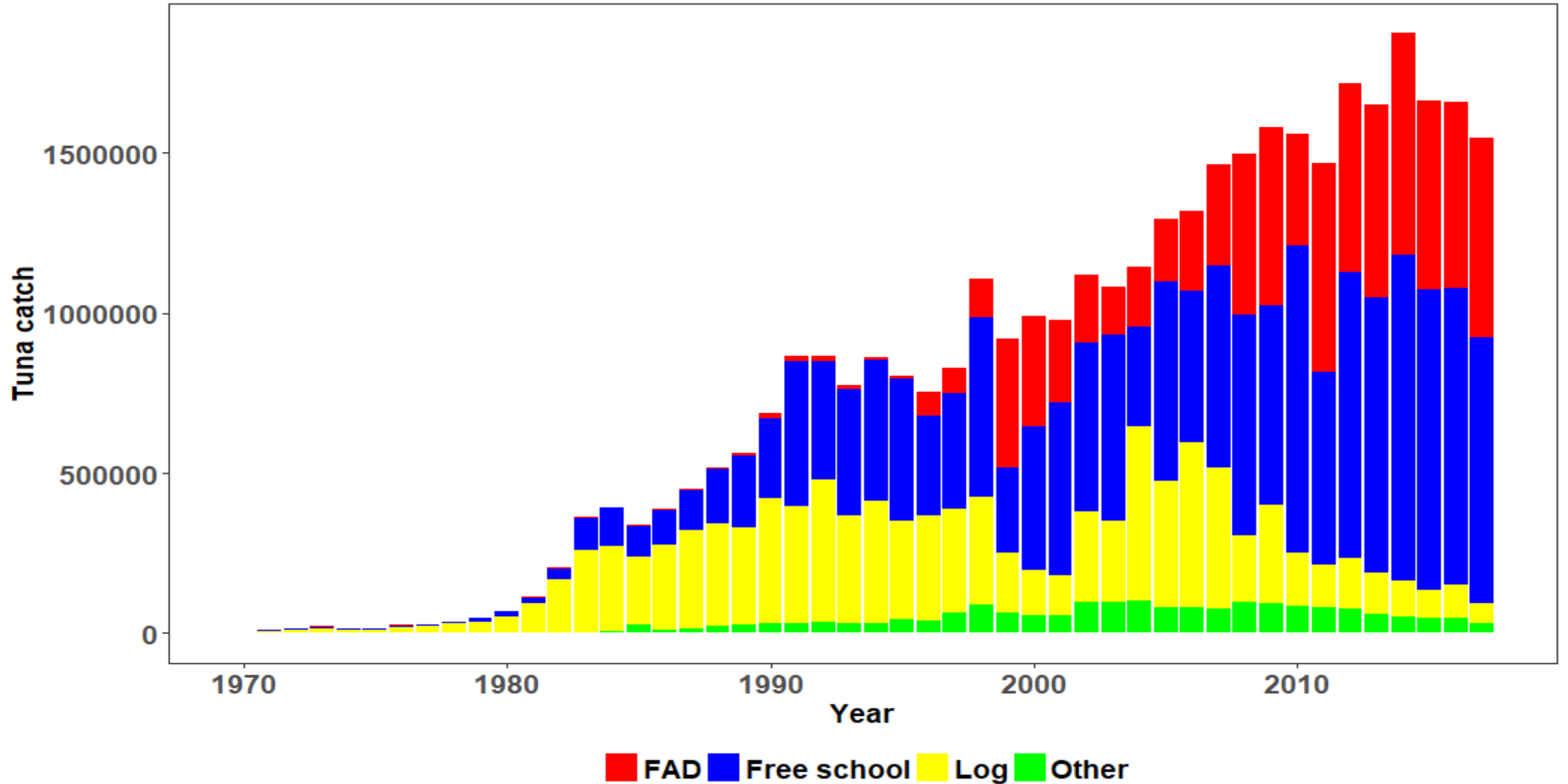
# NATURAL FADS - FLOTSOM



# Anchored FADS / PAYOA



# The Emergence of Drifting FADS in WPO

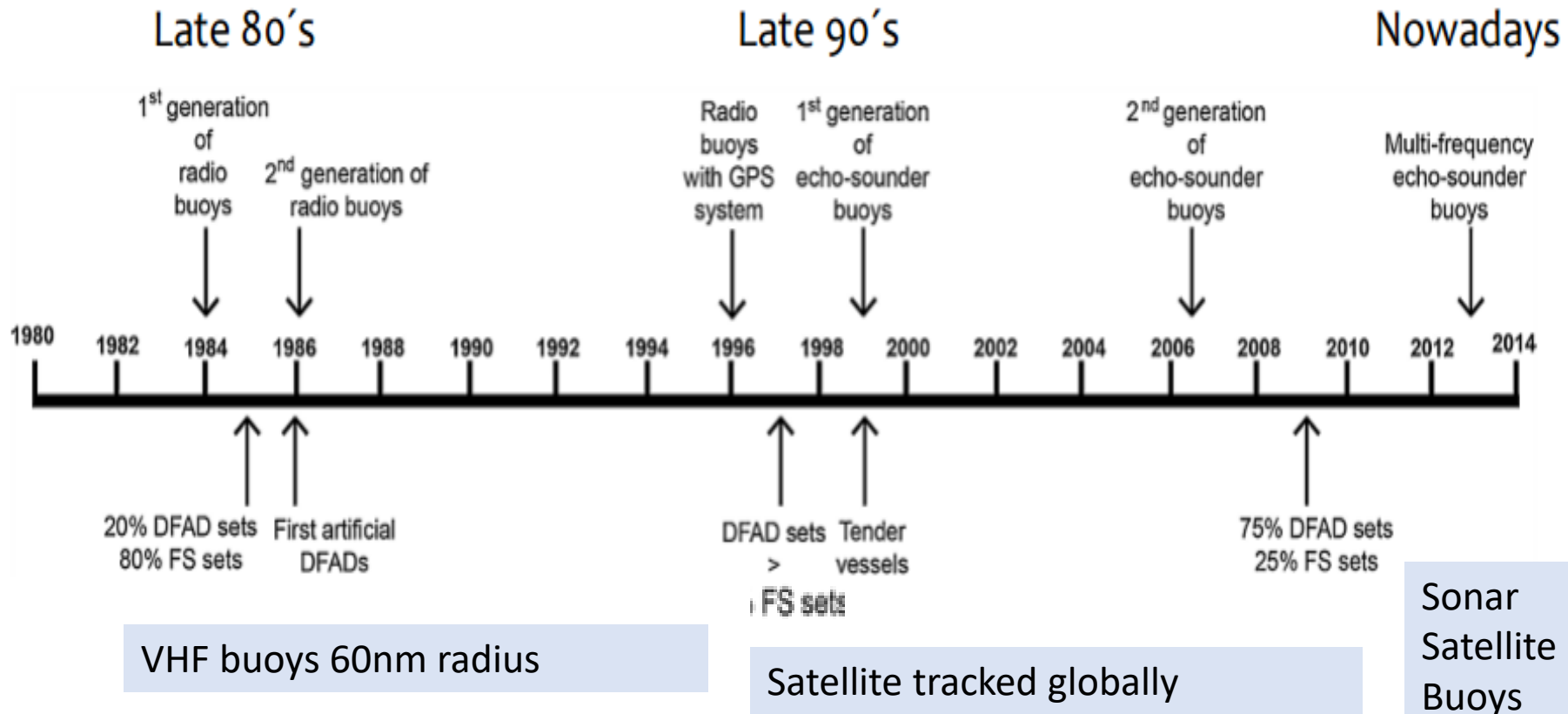


# Drifting FADs ready to load

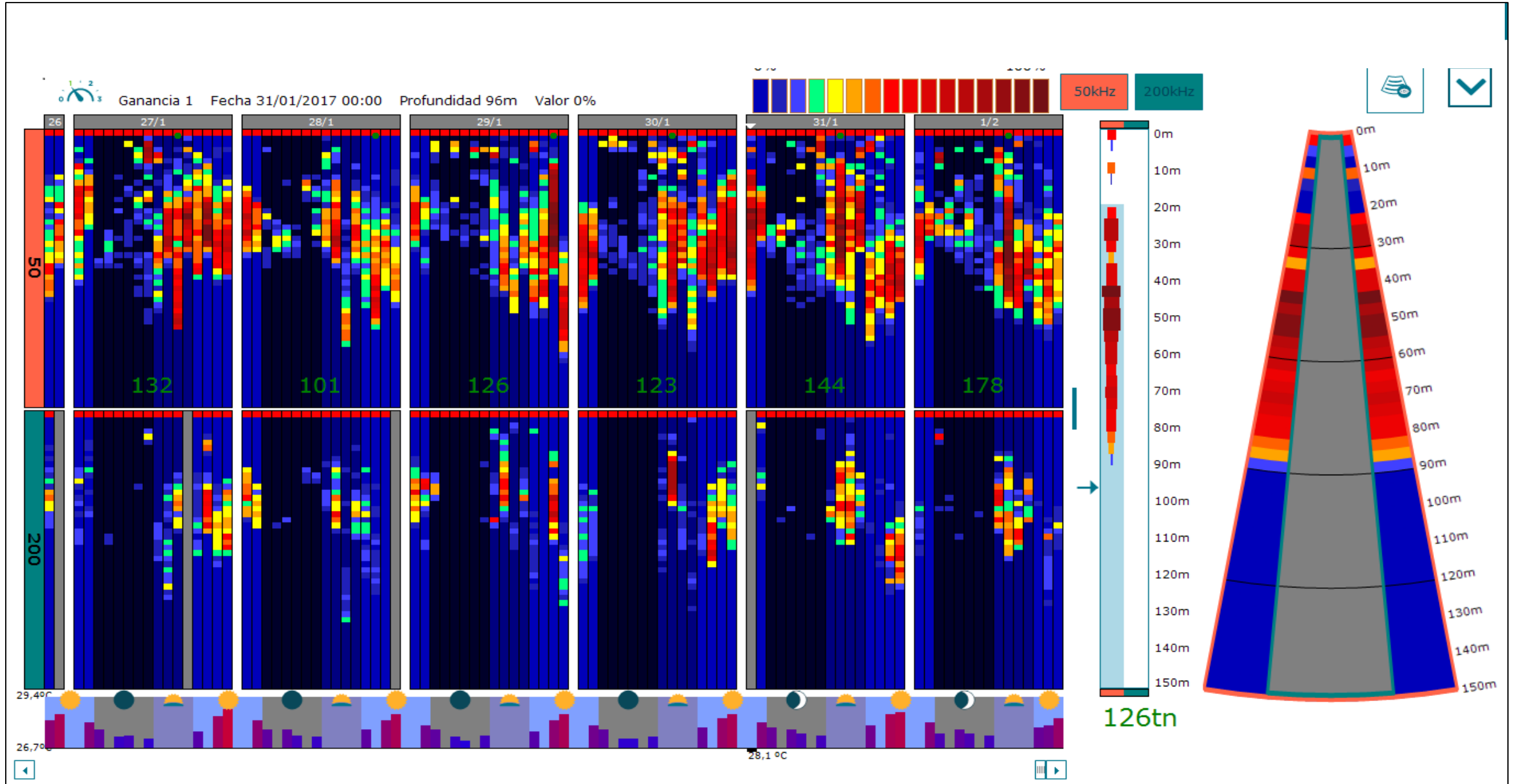


# FAD tracking Technology Evolution

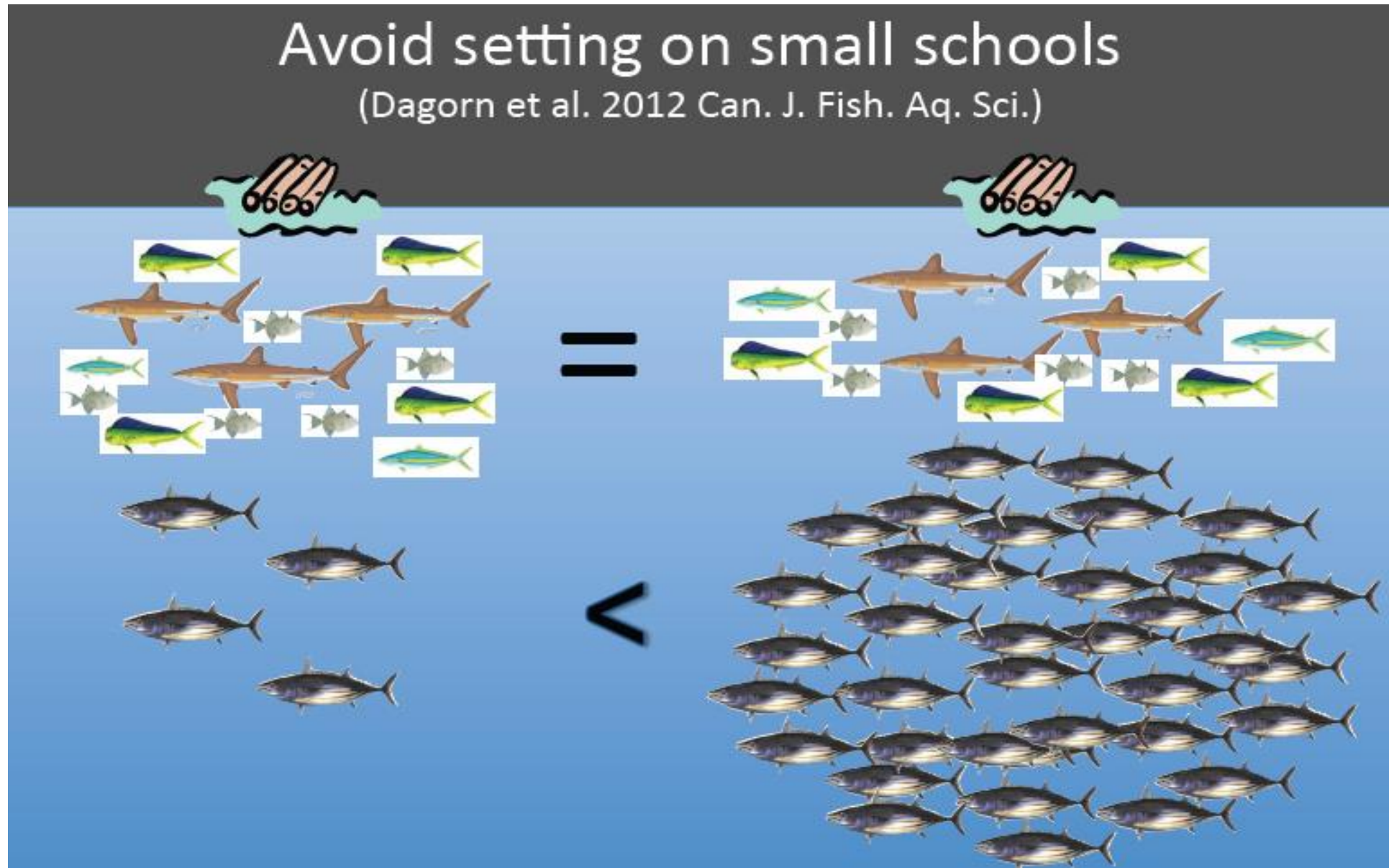
## Searching for FADs



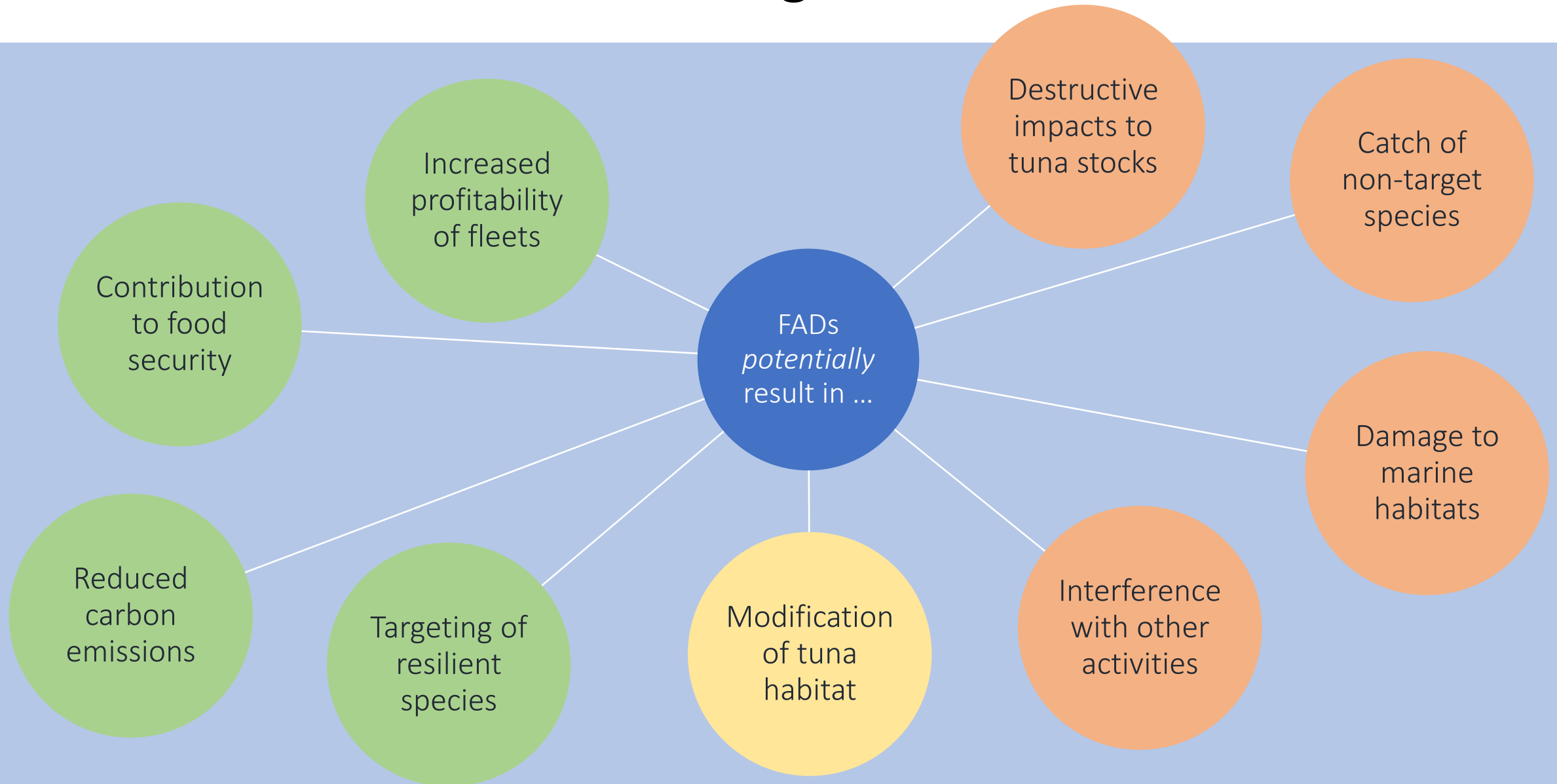
# Sonar Technology continues to improve



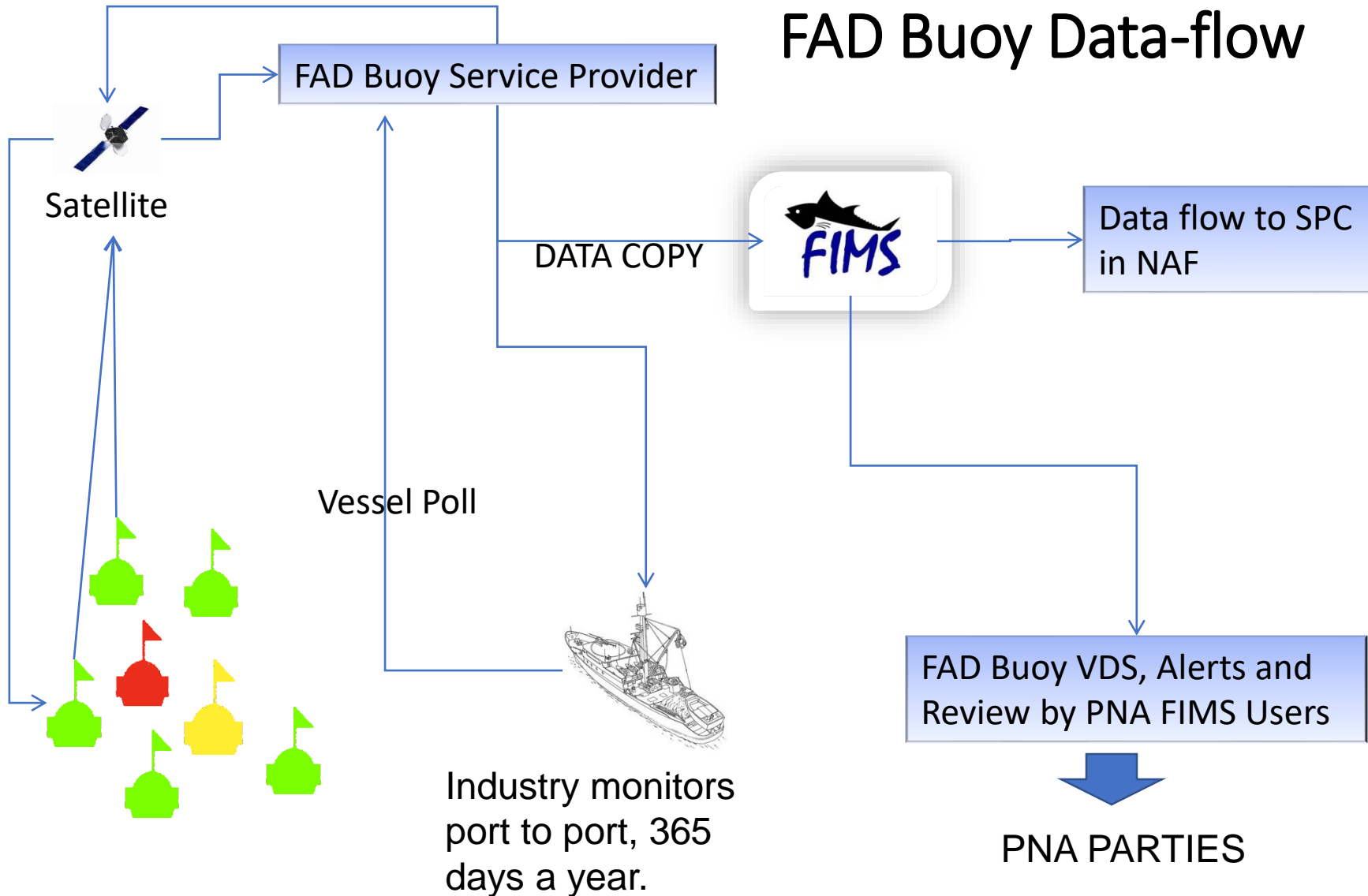
Ironically “Cherry Picking” - could be a part solution?



# Just what don't we know ? - The good and the bad of FADs ?



# FADS and FAD Tracking, estimated 50,000 to 80,000 FADS annually in PNA waters.





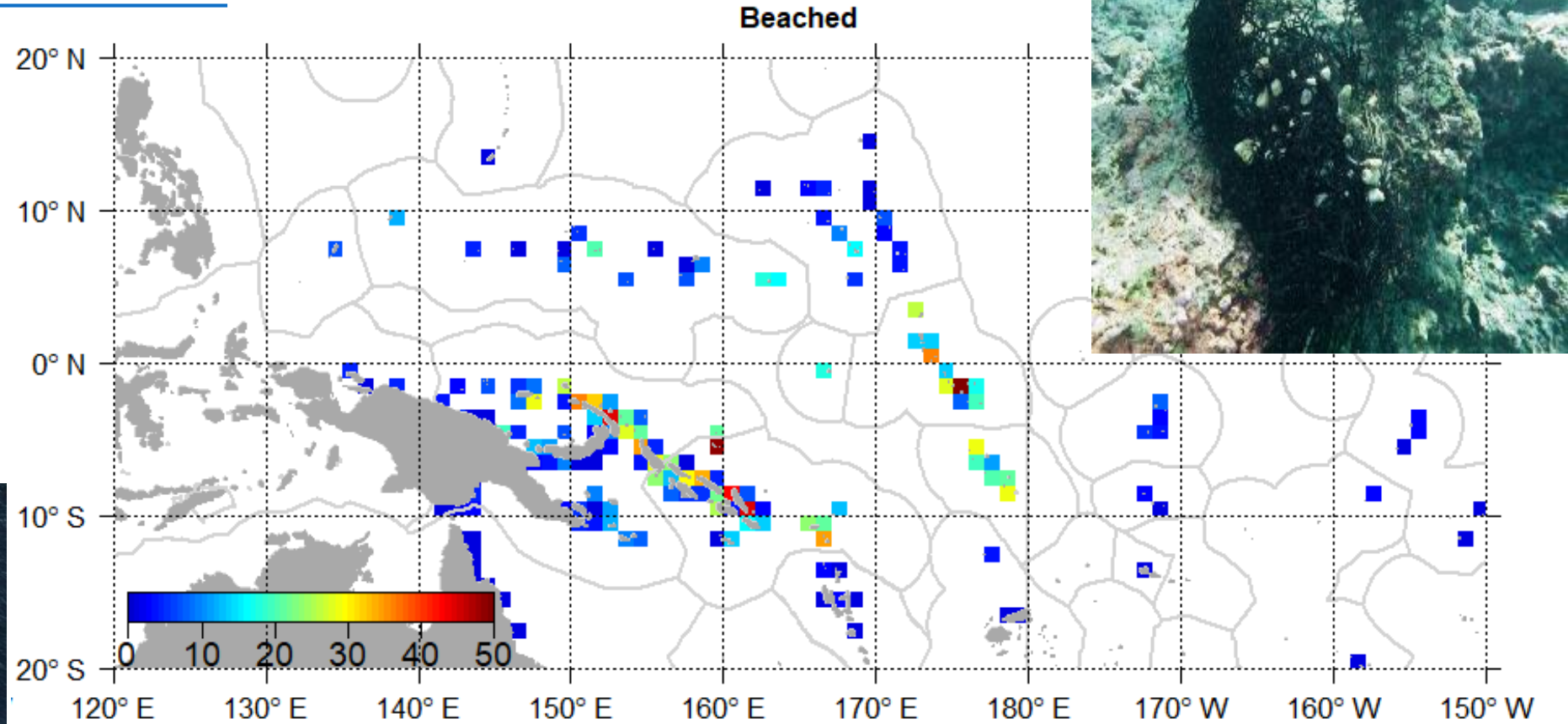
# FAD beaching events

- Beaching data  
Total = 1300      7%

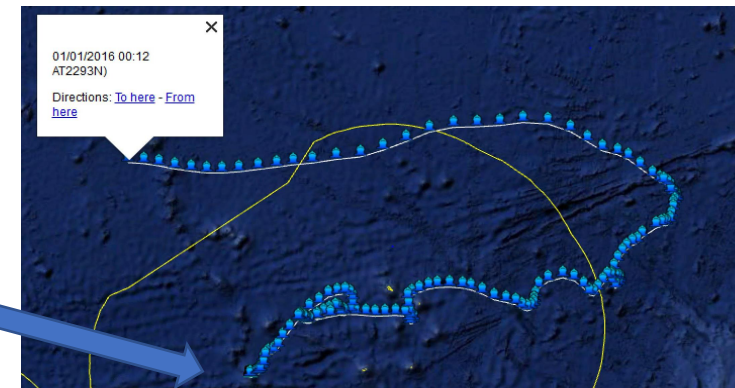
Annual estimates  
3,500 events on reefs



Known FAD Buoy on the reef in Palau.

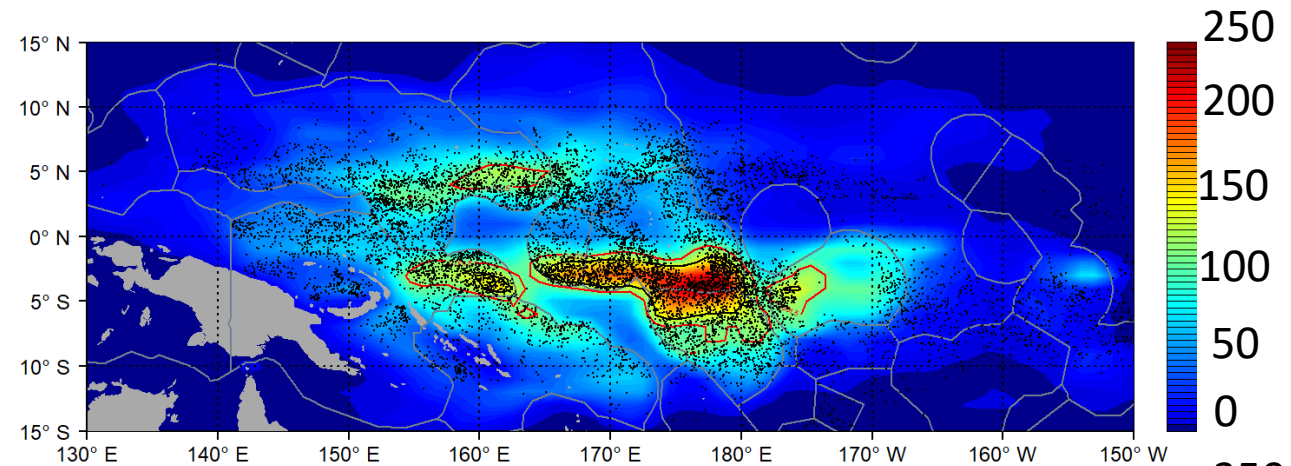


FAD Buoy tracked till  
grounded on a reef in  
Phoenix MPA

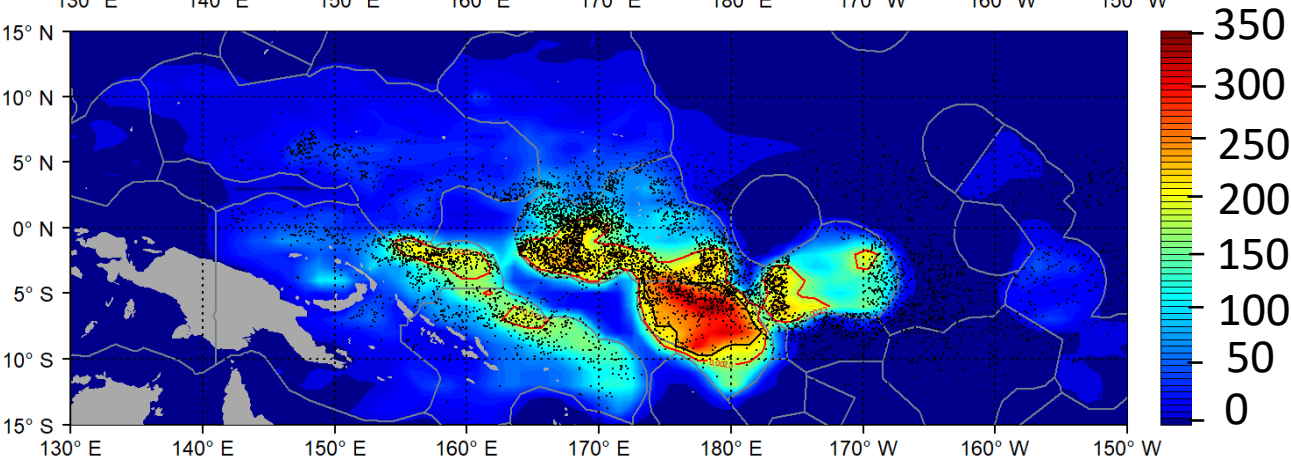
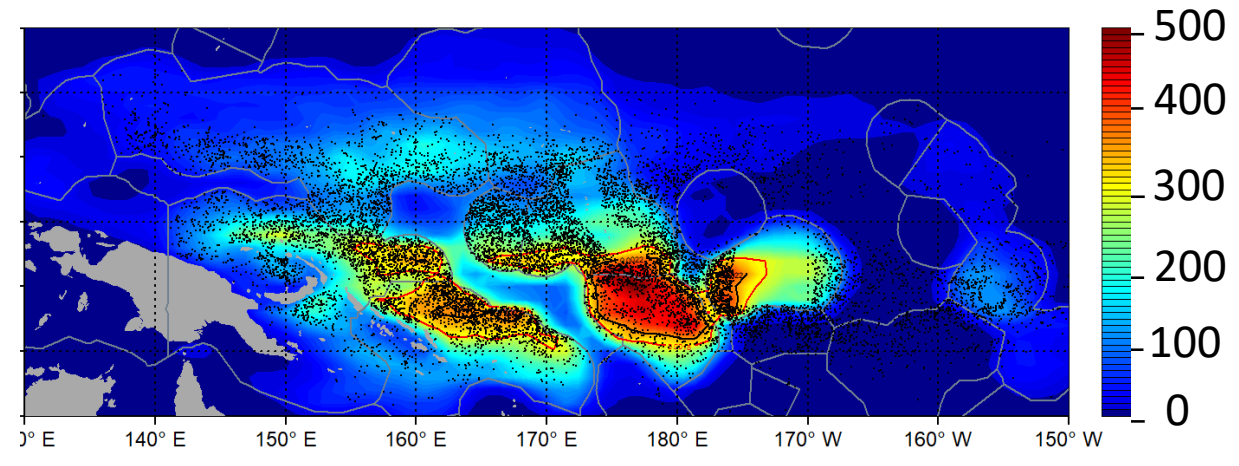


# Reported FAD densities “heat map” [noting geo fencing] + associated set positions

2016



2017

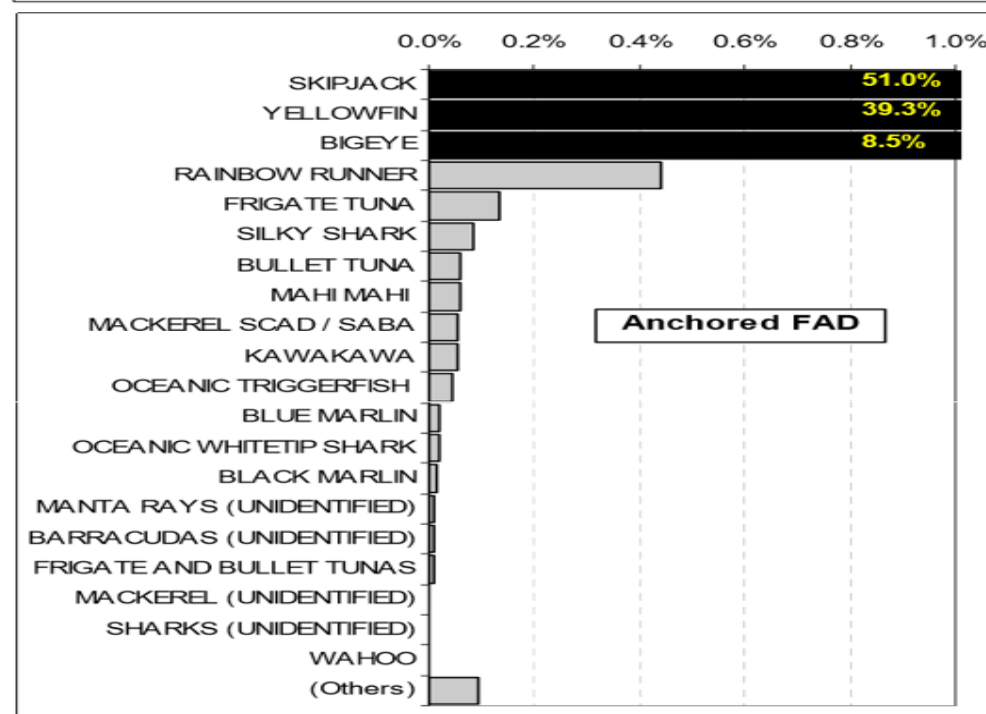
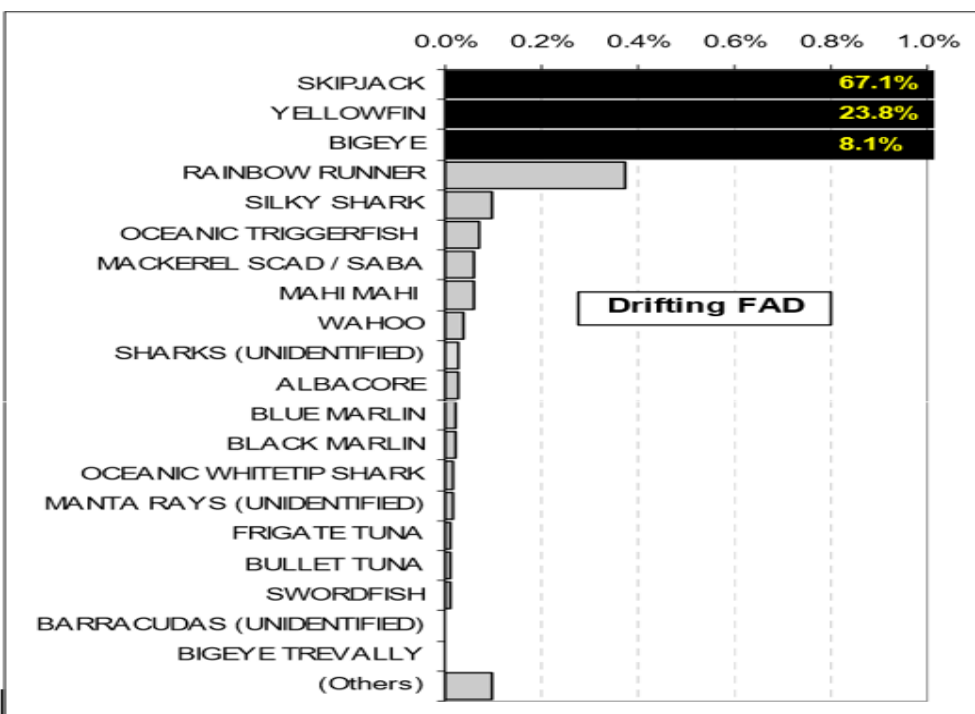
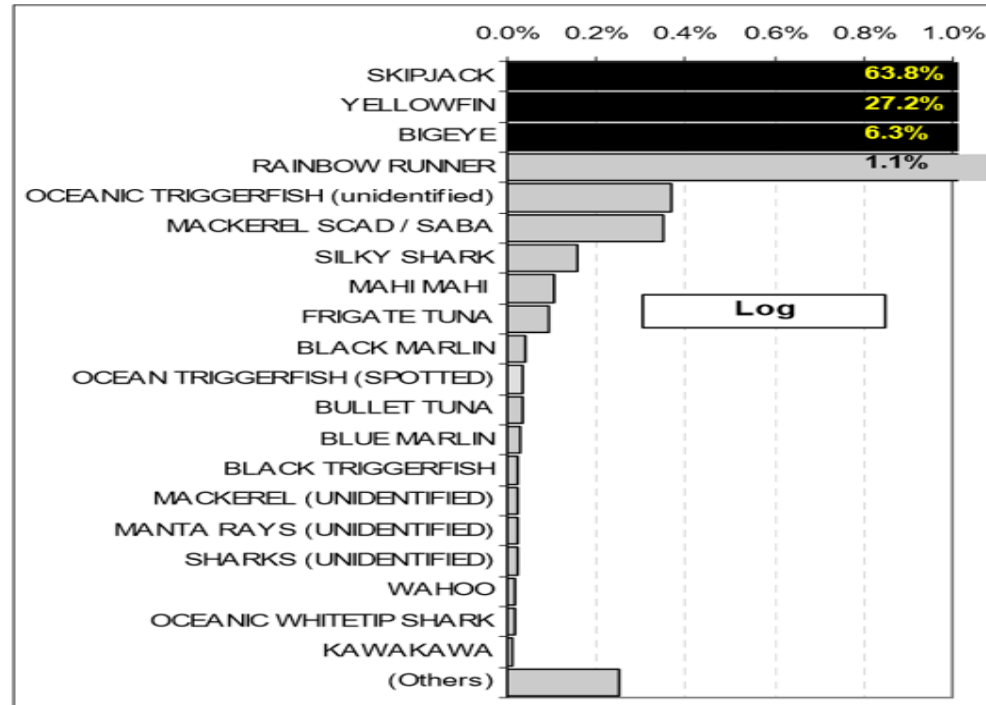
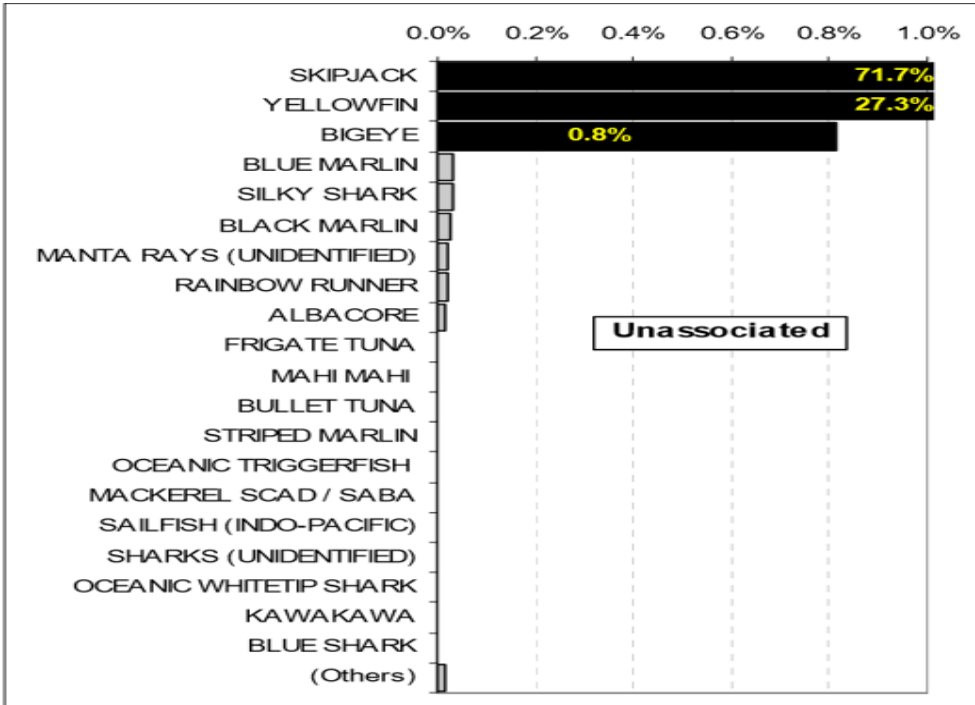


Average number  
of dFADs  
per month

2018

WCP Catch  
on Free  
school and  
associated  
[FAD] sets.

Note: High  
bycatch on  
FADs



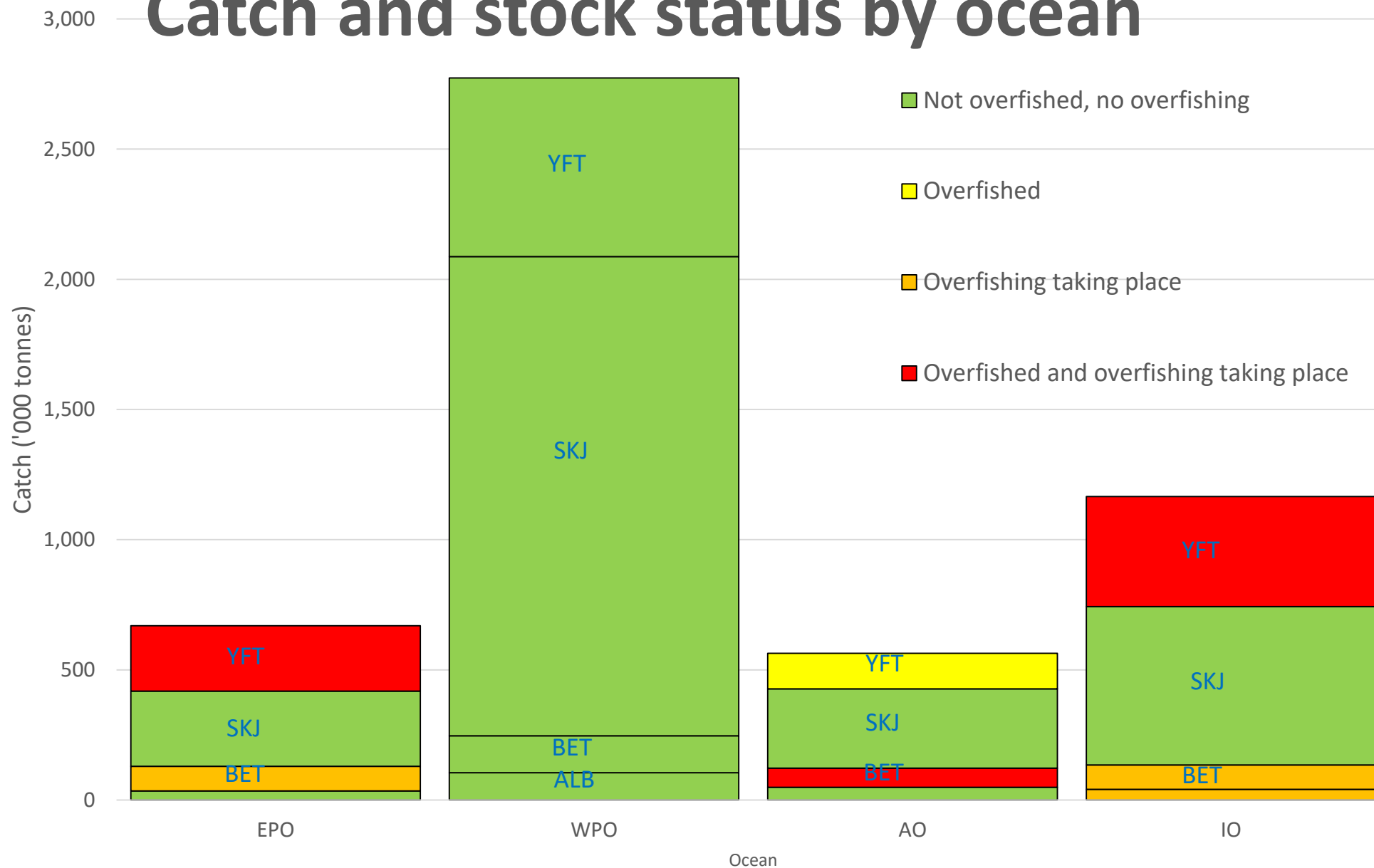
# PNA PACIFIC MARKETING FREE SCHOOL SKIPJACK AND YELLOWFIN TUNA



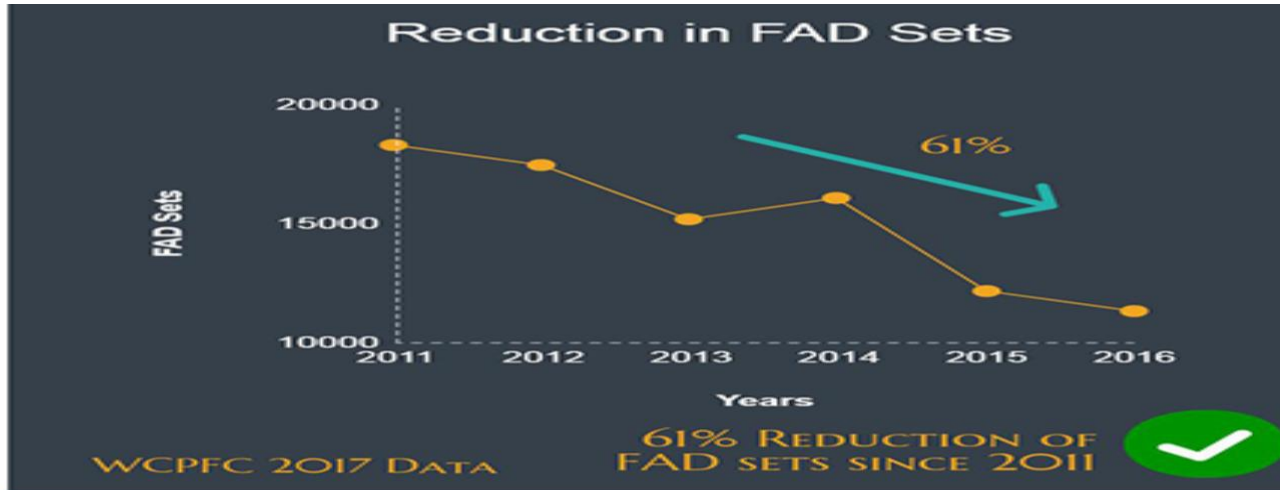
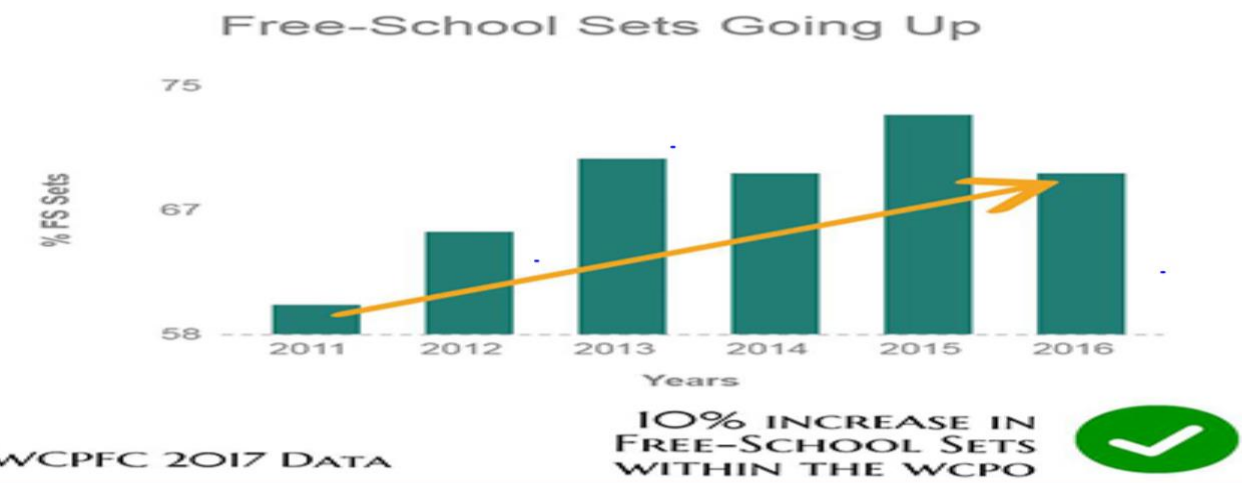
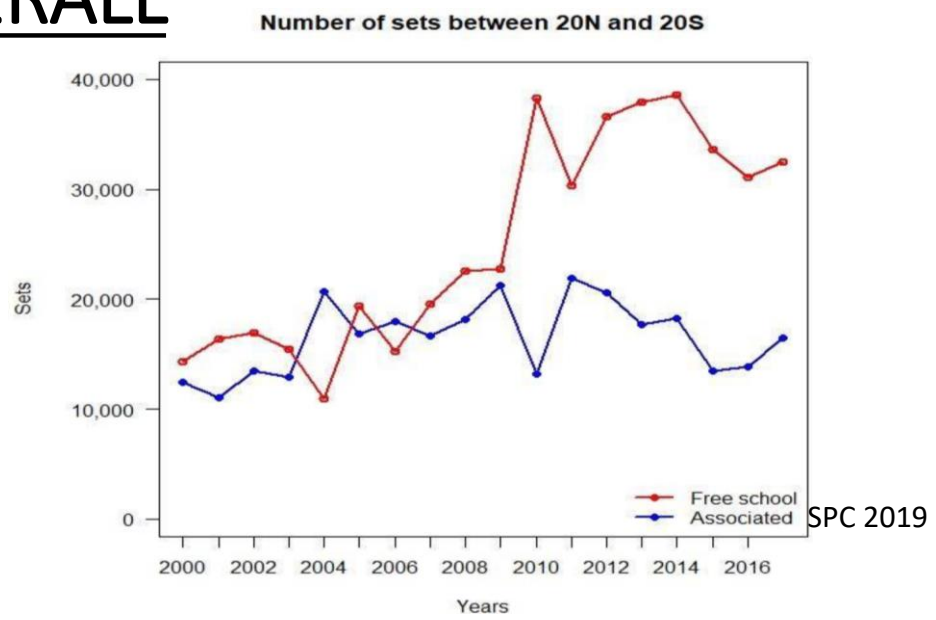
PNA GEOGRAPHIC  
INDICATOR



# Catch and stock status by ocean

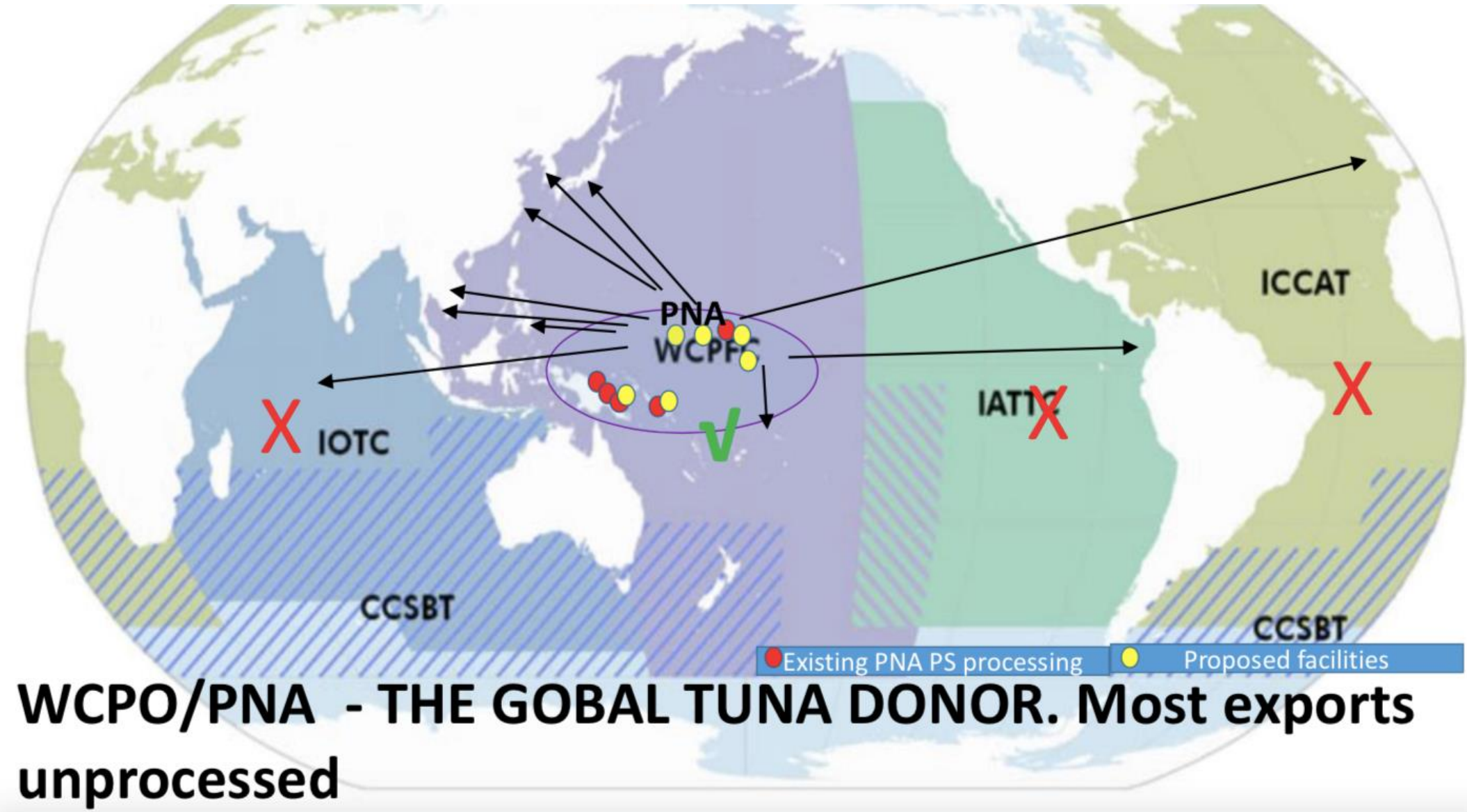


# LIMITED FAD SETS OVERALL



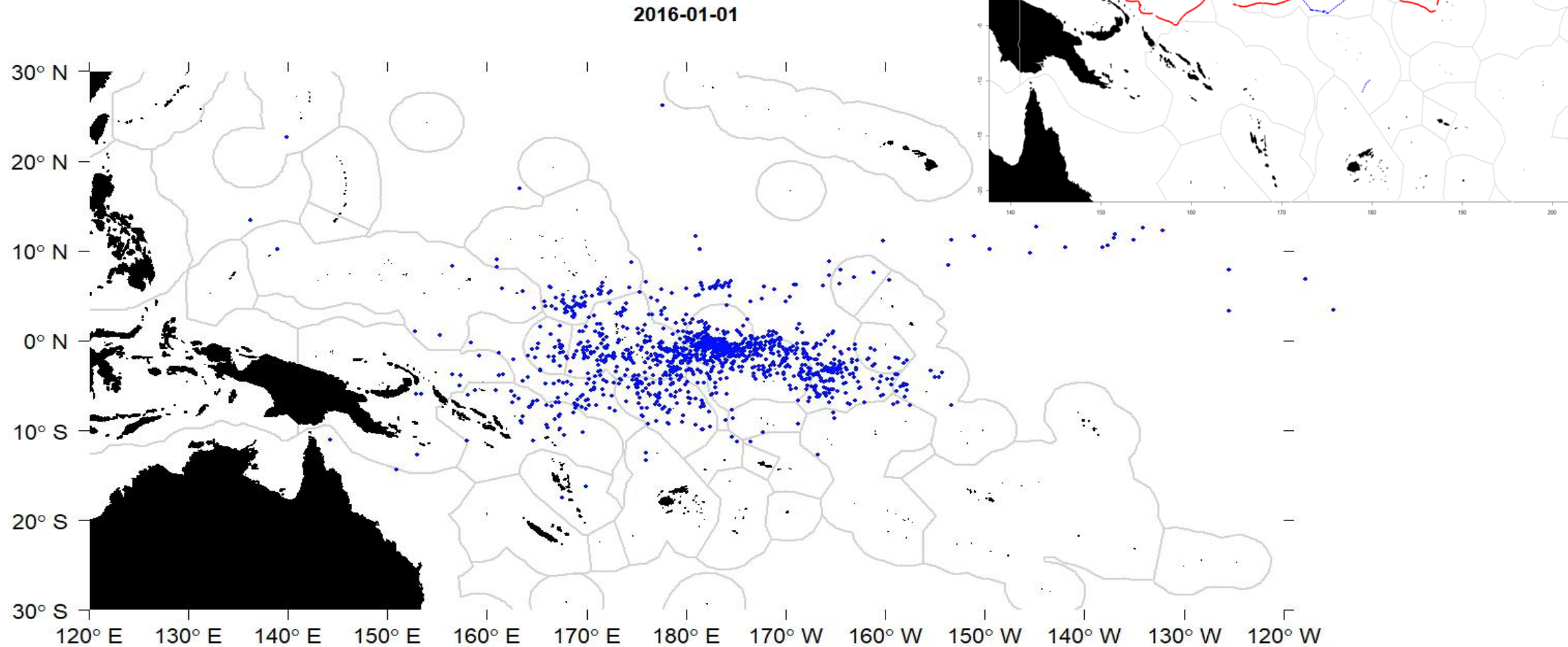
Conservation measures supported by economic incentive to fish more sustainably – “MSC theory of change” - in practice !

# Where does our tuna go?

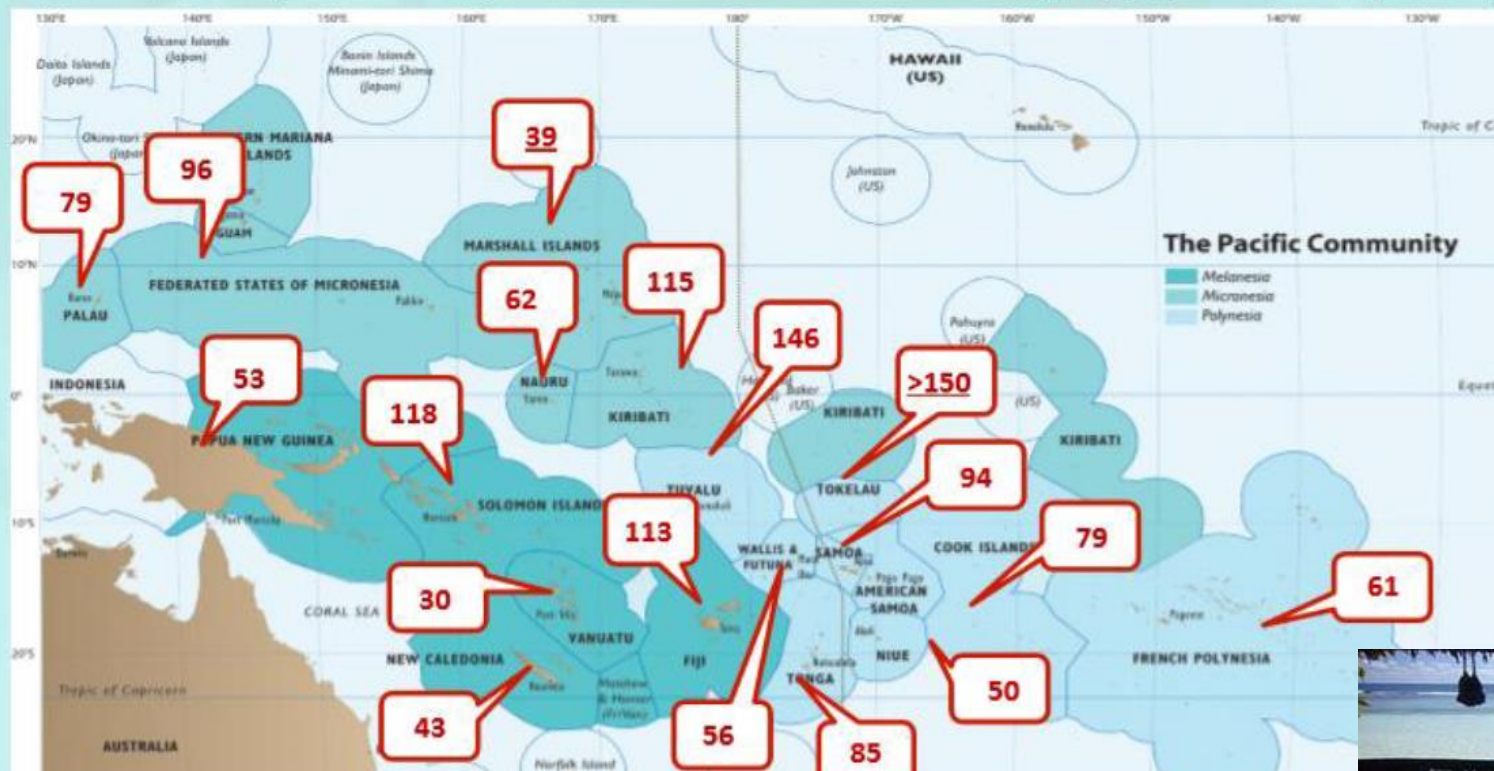


# PNA FAD tracking programme, actual FAD buoys and tracks.

**NOTE : GEO FENCING OF DATA and non reporting**



# Fish consumption in coastal communities (kg/person/year)



THANK YOU

